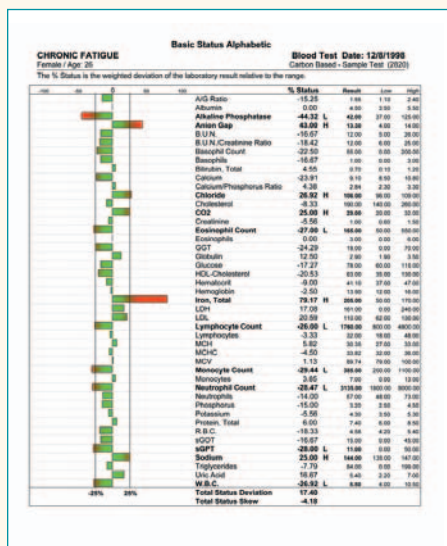


Advanced interpretation laboratory results.

Laboratory testing is one of the most effective tools available to guide you to improve your health. Our advanced LabAssist™ Interpretive Reports provide detailed information, above and beyond that of the lab's results, allowing your health care practitioner to provide an extremely accurate and comprehensive health improvement plan. Advanced testing and reports are available for Amino Acids, Organic Acids, Comprehensive Blood Chemistries, Minerals/ Toxins, Fatty Acids, Cardiovascular Risk, and others.



Sample report page.
The full report averages 12 pages.

crayhon|research|

Real Science-Real Results Nutrition—Education—Testing

For further information, contact

Crayhon Research, Inc.

5355 Capital Court, #101

Reno, Nevada 89502

877-CRAYHON

(775) 823-5333

(775) 856-3313 FAX

www.CrayhonResearch.com

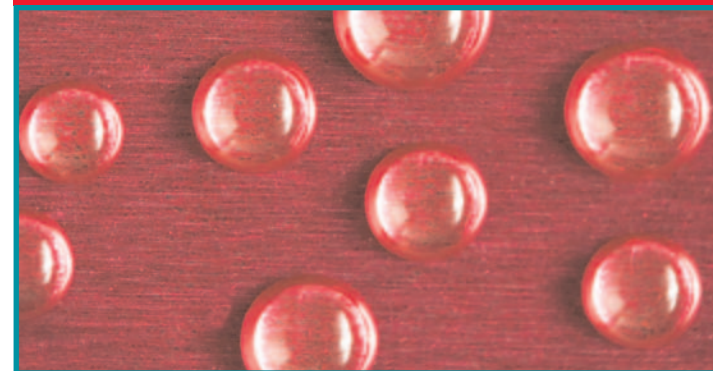
Copyright © 2007 Crayhon Research

crayhon|research|

LabAssist™ Interpretive Report

Comprehensive Blood Mineral Toxins

Whole Blood Mineral
and Toxins report gives a
look into how your cells
are operating.



Mercury—A common heavy metal
that can severely damage your cells and
eventually your health!

Proven tools to guide you to optimal health.

What are Minerals & Toxins?

Minerals are essential nutrients that help to regulate nerve responses, muscle contractions, influence the construction of hormones, and spark the body's ability to create energy from food. These minerals include calcium, potassium, magnesium, manganese, zinc, selenium, vanadium, chromium, copper, lithium, phosphorus, sodium, strontium and molybdenum. Toxins are those heavy metals which can interfere with optimal health. They are also known to compete with the essential minerals and can induce deficiencies in those. Toxins include arsenic, barium, cobalt, nickel, platinum, silver, thallium, tin, uranium, cadmium, lead, and mercury.

Why is testing for minerals & toxins important?

In the past, you could get all the minerals you needed from your food supply and there was far less exposure to heavy metals. In today's environment, the levels of essential minerals is at the lowest levels ever. Trying to supplement the needed minerals is a guessing game. The only way to get around this problem is to find the right test to ascertain your needs. Another issue is to see if there are heavy metals that may be interfering with the normal functioning of your cells. Depending on the results, your health care practitioner may decide to chelate (remove) these unhealthy metals, or may choose some other program to allow your body to excrete them slowly.

The method used is largely determined by your current health status in conjunction with the results from the test. Interpreting the results from a test such as this one used to be difficult and tedious until the advent of the LabAssist™ Interpretive Report. The computerized interpretive report can help your health care practitioner to develop the safest and most effective program to help balance your trace mineral levels as well as rid your body of the unhealthy and toxic heavy metals.

How does this affect me?

| Trace Minerals /Heavy Metals | |
|--|---|
| Trace Minerals— Reported deficiency signs | <ul style="list-style-type: none"> • Hypoglycemia • Anemia • Fatigue • Sterility • Thyroid Dysfunction • Poor Wound Healing • Weakened Immune System • Cardiovascular Disease |
| Heavy Metals— Possible side effects of excesses | <ul style="list-style-type: none"> • Alzheimer's Disease • Autism • Anemia • Learning Disabilities • Memory Loss • Cardiovascular Disease |

The test and LabAssist™ Interpretive Report



Your health care provider can gain valuable information about the overall status of the mineral and toxin levels in your system, through this time-tested and accurate test. Combining it with the advanced computer technology

developed by the research team at Crayhon Research through its LabAssist™ Interpretive Report, your practitioner can design a customized, and properly sequenced, nutritional support program to optimize your chances of achieving balance and overall health.

The test is simple, and requires a blood sample to get all the information needed to get you on your way. Your practitioner has chosen to utilize the advanced testing facility of Doctor's Data, Inc. in Chicago, Illinois to perform the test. The results are usually ready in 2-3 weeks and are sent to the people at Crayhon Research to put the finishing touches on the data with their extensive interpretive report. At that point a complete, individualized program is put together taking into account your needs and requirements

